



740 Griffith Court, Burlington, ON, L7L 5R9
Phone: 905-637-7325, www.burlingtonhumane.ca



Remembering John Wayne



By April Mraud



Four years ago, we told you about a lovely tabby who had a fractured limb and BB gun pellets embedded in his leg, chest and shoulder. Burlington Humane took over this lanky tabby's care and named him John Wayne.

John Wayne underwent surgery to repair his injuries, and even though the pellets were not removed, he made a full recovery. He was so loved by the staff at the clinic

where he was recovering, that Clarisse, one of their staff, arranged for John Wayne to become their clinic cat. Voila - John Wayne became Gus.

We wondered...whatever happened to this boy? Clarisse decided to take him home with her one year for "Christmas vacation". However, it quickly became clear to Clarisse that this lovebug was "meant to spend his days snuggling on the couch". She describes him as "the most vocal and mischievous member



Continued on page 3. See "John Wayne"

*Helping People &
Animals Since 1974*

*Registered charity number
119254498RR0001*

*Happy Holidays from the Board
and Staff at Burlington Humane.*

**Where can you find
Burlington Humane?**

Our Website:
BurlingtonHumane.ca

Facebook:
*Burlington
Humane*



Instagram:
*@Burlington
Humane*



Twitter:
@BurlHumane



YouTube:
*Burlington
Humane*



President's Message

By April Mraud



Compassion, dedication, teamwork and commitment - this is what defines Burlington Humane. As we continue to evolve as an organization, adapting and making changes along the way (thank you Covid!), our commitment to the stray and abandoned animals of Burlington never falters. They continue to be our "raison d'être"!

Every person connected to Burlington Humane plays a vital role in ensuring that each animal that leaves our shelter goes to their "forever" home - our extraordinary volunteers who perform an untold number of tasks, our steadfast Executive Director, Doug Shirton, who ensures we continue to strive to achieve the goals of our Mission Statement, and our dedicated Adoption Counsellors and Animal Care workers. Each holds the welfare of every animal that comes through our doors as the

guiding principle by which all decisions are made.

Despite the continuing challenges we've faced, our adoptions have not abated and we have been successful in continuing to find loving homes for the animals who come into our care. We continue to herald each happy match made between a pet and their forever family!

In closing, on behalf of the Board of Directors, I'd like to express my deepest gratitude to each and every one of you who support Burlington Humane in some way - our staff, our many volunteers and our supporters in the community, and wish everyone a Safe and Happy Holiday Season, and a wonderful 2022!



Start the new year off right with our 2022 Burlington Humane Calendar.

Makes a great gift.

Available at Burlington Humane
for just \$20.00

BHS Directors and Staff

President	April Mraud
Vice President	Andrew Mack
Secretary	Patricia Howard
Treasurer	Karen Hunter
Stores Liaison	Carole McArthur
Education,	
Membership & Donations	Mary Hopkins
Pet Therapy Liaison	Regula Mueller
	Silvia Patrizio
Directors:	Karen Fowler
	Jolene Regan
	David Rosati
Executive Director	Doug Shirton
Adoption Counsellor	Cindy Lupien
	Camille Ouellette
Animal Care Workers	Gilda Theurer
	Ammar Al-Jailawi
	Julia Dickson
	Dee Perrie
Volunteer & Events	Shahana Ziab

Executive Director's Message

By Doug Shirton



During the chaotic time we have been enduring, Burlington Humane has never lost sight of our purpose; to provide our animals with their forever home. And having a pet can help relieve stress as cats and dogs can sense when we are sad or under stress.

More and more of our animals are going to their forever home before they are completely available. That animal's status is called Foster to Adopt. If an animal is waiting for their spay appointment, they do much better if they are in a home environment rather than waiting at the shelter. The potential adopter can take their chosen pet home and care for them under the supervision of BHS. Once their animal has completed all their health requirements, that animal can be officially adopted.

Our animals are finding their forever homes and we are constantly finding new ways to make adoptions easier. We are now able to do remote adoptions, so an animal in a foster home can be adopted by their new owner having 'met' the cat or dog via Zoom. In the past year two-thirds of our animals

were adopted by their parents using this remote adoption system.

We have many animals in foster care and previously, when they became available for adoption, we would bring them back to the shelter. We realized that many animals continue to thrive in foster care, even once they are made available. So, we are allowing available animals to remain in their foster home, until they find their forever home. As the world gets more comfortable with video telecommunication systems such as Zoom, we are using it more and more so that potential adopters are able to remotely visit with the animal of their choice.

Our online presence is as strong as ever as we continue to showcase our animals. We feature an animal each day and also do room tours that feature groups of available animals several times a week. Be sure to like us on Facebook, follow us on Twitter and Instagram and subscribe to our YouTube channel to see all the latest animals available for adoption.

"John Wayne", Continued from Page 1



of our household" who enjoys cuddling with his forever best canine friend and acting as sous chef anytime someone is cooking."

We think you'll agree with Clarisse that Gus is a "special cat who beat the odds, and found a forever family!"

The Ariel Fund is a special fund to pay for care to injured or ill cats like John Wayne. We thank all our supporters and donors who donated to the Ariel Fund to help BHS provide such critical care to animals like him.



How do you Spell Adorable? Z I M M I E !

By April Mraud

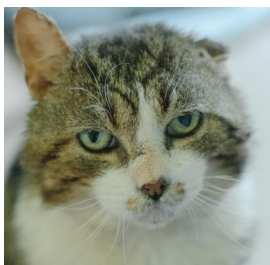
This boy is the whole package! He loves cuddles, and belly rubs, and kisses everyone! He can be a busy boy but he also enjoys relaxing with his foster family while getting all the love! Zimmie loves people so much, and he likes other dogs too!

This handsome 2 year old boy is the picture of health and exuberance even though he has a condition called exocrine pancreatic insufficiency (EPI). EPI makes it difficult for Zimmie to keep weight on but with an enzyme supplement and a prescription diet, he'll be perfectly fine and this condition will be fully managed. Given how easily Zimmie adjusted to his foster family, we have no doubt he'll settle right into a new home. Please visit our website, burlingtonhumane.ca to learn more about this gorgeous boy!



Throw-away Cat? Or Diamond in the Rough?

By April Mraud



Francis was a thoroughly bedraggled stray. His ears were infected with mites, one ear being permanently misshapen; conjunctivitis, chronic sinus infection, upper respiratory

infection and an FIV+ diagnosis... you get the picture...he was a mess!

But Marie and John, who saw him on our website, were drawn to him! It only took one meeting for them to know he would be the perfect new addition to their home. Francis acquired a following of volunteers who loved him! While he is missed, this story couldn't have a better ending and we are thrilled for Francis, Marie and John.

The Loft and The Attic

Burlington Humane's second hand stores.

Purchase a wide variety of gently used Christmas decorations, table centre pieces, candles, crockery and clothing ; everything you need to get ready for the season.

The Attic

479 John Street

The Loft (At BHS)

740 Griffith Court

Stocking Stuffer Ideas

Gift Baskets, Catnip mice, Feliway Diffusers, Gift Membership or In Honour donation for that hard-to-buy for animal lover. Items from our second hand shops, the Loft and the Attic.

There's no Place like home For the Holidays

Meet Some of our Longer Term Residents

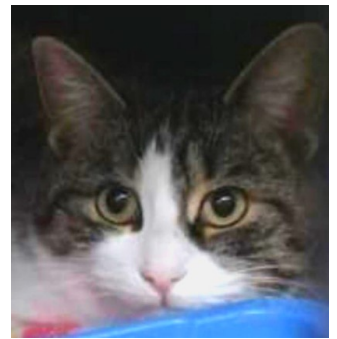


Lovely Beatrice—resident for 5 months

Beatrice is a delicate, shy 1 year old tortoiseshell stray. She has never known the luxury of a forever home but with the right environment, and a lot of patience, we just know she'll make someone a perfect, quiet companion. She would do best in a home without children.

Wary Snow - resident for 9 months

This beautiful white-bibbed 3 year old tabby girl has wide inquisitive beautiful eyes! She was a truly tough nut to crack but this gorgeous feline is finally coming out of her shell, with the help of Mirabelle, a one and a half year old tabby! Perhaps she and her new gal-pal, could find a home together? This would be the perfect ending for Snow, who has seen many, many cats leave for their forever homes. Do you have a place in your heart and home for these two beauties?



Handsome Hunk JR—resident for 3 months.

JR was brought to BHS 3 months ago by a kind person who found him as a stray. We were thrilled to find a microchip, only to be disappointed that the owner was not interested in having him returned. This stunning mackerel

tabby boy is 12 years old and has been declawed. Left outside to fend for himself, we are enormously grateful to the person who brought him to us. In good health, JR is a social, loving cat who would prefer to be the only cat in the house. We know his forever family is out there and he knows it too!

**She's there for you.
Be there for her!**

Take Pet First Aid.

**Next course is
March 6, 2022**

**Here at
Burlington Humane.**



Let's Talk about Declawing

by April Mraud

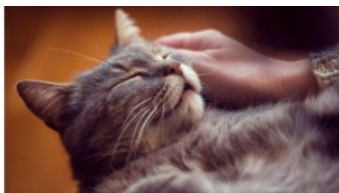
Eight provinces have banned the declawing of cats, a cruel practice that amputates a cat's claws at the first knuckle. This can have unintended health consequences for a cat as well as being extremely painful for the animal. The Ontario Veterinary Medical Association, Canadian Veterinary medical Association and Humane Canada have all published statements on their opposition to this procedure.

Ontario, however, remains a hold-out on banning this practice. The Bill introduced by MPP Marit Stiles, called Teddy's Law, was unfortunately suspended when the Ontario legislature was prorogued. However, it will be re-introduced when the legislature resumes shortly. Once passed, the practice of declawing will be banned in Ontario.

Please lend your support to this important legislation. Reach out to your MPP, and share your concern with your veterinarian. Our feline friends are counting on us to help end this cruelty to cats. For more information, see: <https://www.canadianveterinarians.net/documents/news-release-canadian-veterinary-medical-association-opposes-declawing-of-cats>

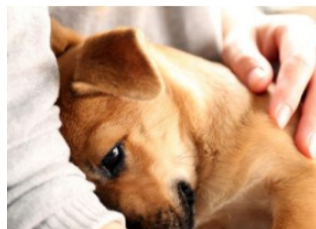
Calling all New Pet Therapy Volunteers!

Are you a dog or a cat living in the Burlington area? Are you kind and gentle, and love getting strokes from *everyone*??



Then, tell your human to call Burlington Humane at 905-637-7325, or email

volunteer@burlingtonhumane.ca to arrange an appointment with the pet therapy assessment team. Start visiting seniors at your local nursing or retirement homes and get all the strokes that you deserve and desire!



Wish List

Durable Dog and Cat Toys

Cat Crates/Carriers

Cardboard Scratch Pads for Cats

Facial Tissues

Healthy Cat and Dog Treats

1/4 Measuring cups

Canadian Tire Money

8.5 x 11 Printer Paper

Canada & U.S. Stamps

Gift Certificates from Pet Food or Grocery Stores

Royal Canin Kitten/Cat and Puppy/Dog Food

We are a Royal Canin sponsored shelter and ideally like to feed all of our animals Royal Canin food. However, from time to time we get 'picky' cats and therefore like to have other options in case such as: Purina Kitten Chow, PVD Kitten (canned), Hills Science Diet Pate, Friskies, Whiskas & Snappy Tom.

In Memory Donations - October 2020 to October 2021



THANK YOU!

THANK YOU!

THANK YOU!

Thank you everyone for all of your wonderful support! With your generosity we can continue to provide aid and care to homeless and abandoned animals. Knowing that our community cares is a true blessing. We hope to continue to make you all proud!

In Memory of People

Albert Mattiussi
Annemarie Lebkuecher
Brian Carlisle
Brian Dunn
Brian Krogg
Carla Puglia-Ribeiro
Carol O'Hare
Carole McNaughton
Chris Bryce
Christine Graham Alexander
Christine Mason
Dan Turcek
Deborah Caldwell-Card
Ella Mae Griffey
Eric Brown
Fitz Williams
Frank Galbraith
Gail Dafoe
Gail Thompson
Gary & Drew Cooke
George Bartkus
Geraldine Amelia Day
Germaine Black
Harold Leach
Helen Smith
Son Mark
Igor Ivkovic
Jake van Roon
James A. Leonard
Jo-Anne Traverse
Johanna DeBoer
John Albert Wilson Hall
John Stirling
Joy Lloyd
Judi Henry
Julie Baird
Julie Lukkarila
June Davidson
Justina
Karen Pola
Kathryn Tyler

Koren Murray
Lawrence Cragg
Leigh Stojakovich
Lilli Birk
Lillina E. Gothergill
Linda Finelli
Lucy Teixeira
Margaret Graham
Maria Ribiero
Marie Nichols
Mary Elizabeth Gorgei
Mary Kennedy
Mary Margaret Barlow
Mrs. Cecille Mielzynski
Newman Regan
Norm Proulx
Peter Cullen
Porie Aitken
Rein Piibe
Rita Benoit
Robert clerk
Rosalie Anderson
Ruby Dormady
Russ Wagstaff
Ruth E. Fisher
Sandra Johnston
Shirley Osborne
Sydney Tomei Leonard
Wendell Mowbray
Wendy Ernst
William Colin Bradbury
Winifred Beck.

In Memory of Cats

All my past pets
Arizona and Cleo Clark
Bailee & Ruby
Boo Mitchell
Bosley
Bronte
Brulee
Buddy
Bunny, Moose, Daisy, Callie,

Charlie & Sam
Charlie
Cleo
Downey Altman
Emma Fish
Feliz Summers
Fletcher
Furry Murray
Ginger Jelinek
Gizmo
Harley and Lambeau
Harry Wilson
Horatio Riodon
Kahlua
Kitty
Leia Leclerc
Levi & Maria Gerritsen
Link Ehsan
Lizzy
Marty
Miranda Robinson
Molly
Monty
Morris Peers
Morris, Lucky & Kitty
Mowgli van Monsjou
Phantom
Pixie
Remy Wickens
Rigatoni
Rocket
Rufus
Rupert Ingram
Salem
Smokey

Snickers & Pepper
Sweet Pea Allaire-Budge
Tia Dew
Tiger Chambers
TJ

In memory of Dogs

Abby
Ailyn Hicks
Arya
Bailey Lewis
Baloo Rogers
Bandit
Bean Gatsos
Bella
Bones
Boston Boudreau
Brady Redman
Bronte Thompson-Martin
Daisy
Daisy Decoste
Daytona
Django
Duke
Emma Brown
Frankie
Gage
Gilmour van Monsjou
Gryphon
Harley Bonnet
Izaiah Dion
Jack Cairns

Kailey Maunder
King
Lacey
Leif Winstanley
Leiya McDonald
Lilly
Logan Walker
Lola
Lola Leblanc
Maggie
Magoo
Magoo, Bentley, Indy
Marley Graham
Maverick
Miko
Murphy Findlay
Pablo Chanan
Peyton Boin
Pita
Quincy Magnus
Riley
Rolo
Rufus
Rya
Sadie Sue
ShayShay
Shelby Bandy
Sunny & Nicky
Suri Dinah
Teddy Byrne
Tinkerbell
Tucker
Wilbur Hobbs.

We really appreciate the wonderful support that we receive from the community. Thank you so much for all your generosity. While every effort is made to ensure accuracy, we apologize if omissions or errors have occurred.

Ways to Give this Season and Beyond!

Monthly Giving



Donating monthly is easy and convenient. You can set up pre-authorized bank withdrawals each month. Monthly donors are very important to Burlington Hu-

mane as it provides a stable source of income for budgeting. These funds help provide a safe place for stray and abandoned animals of Burlington, while also providing top quality medical attention and shelter care, including rehabilitation and socialization. There are many ways to donate. Visit our website for more information. If you would like to become a monthly donor through automatic bank withdrawals, please contact Burlington Humane at (905) 637-7325.

Legacy Gifts



Legacy Gifts allow you to make a future donation to Burlington Hu-

mane without affecting your current financial circumstances. Regardless of the size of your planned bequest, you can be sure that your gift will continue to make a lasting and important impact on the animals we care for. We are so very thankful to those who have left a legacy to BHS. Providing a bequest allows your commitment and compassion for our animals to continue.

Fun Fact

It takes eighteen muscles to move a dog's ear. This helps the dog pinpoint the origins of sounds much faster than a human can. A dog can locate the source of a sound in 1/600 of a second and can hear sounds four times farther away than a human can.

WE ARE PROUDLY INDEPENDENT!

Burlington Humane is a member of Humane Canada.
We are not associated with the Hamilton/Burlington SPCA.

A Special Thanks to Our Sponsors



SKEDADDLE
HUMANE WILDLIFE CONTROL™

